



Handwriting Policy (June '23)

At Moston Fields Primary School, we teach handwriting using the 'Improvement in School through Handwriting and Art' (ISHA—Martin Harvey) handwriting scheme. This is based on the Nelson handwriting scheme. The approach progresses through the school with an emphasis being placed on the use of consistent language. Specific handwriting displays in each classroom will reflect the consistency of language and approach used throughout school.

At the start of every term, at Moston Fields, we drive up standards of presentation. Handwriting has to be taught intensively for a sustained period, if the initiative is to have the required impact.

'Do a little and do it often' is what will make the most impact. Therefore, handwriting is taught every day for 10 minutes in the Autumn Term, reducing to three times per week in Spring and Summer if the impact can be seen and good habits in the class are formed. Handwriting is to be presented in the children's handwriting books that have guidelines to support letter formation. Spending dedicated time on handwriting every day will drive up standards, not just in their handwriting and English books but in ALL books across the curriculum.

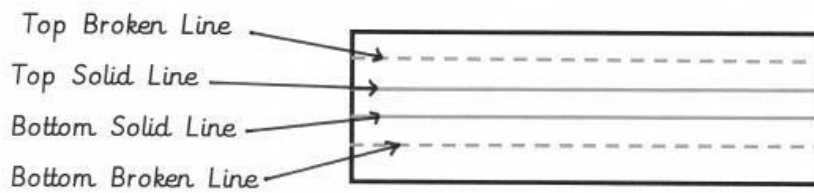
Prior to a handwriting session, staff will ensure that the children are prepared to write by...

BBC – Bottom Back in Chair

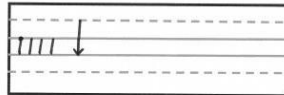
TNT – Tummy Near Table

Six feet, two hands – chair and child feet plus one hand to write with and one hand to hold the page still.

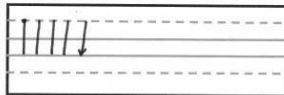
During a handwriting session, staff will remind children of the following key elements of letter formation and where letters sit on the line by...



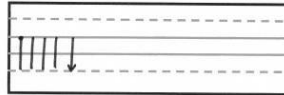
Short Lines



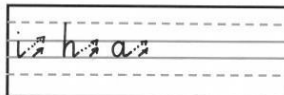
Tall Lines



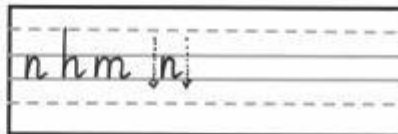
Tail Lines



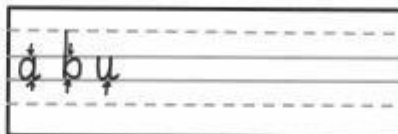
North-east Joining Line
 or
 Diagonal joining stroke



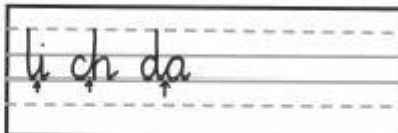
Narrow bridges



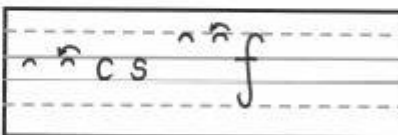
Letters with triangles



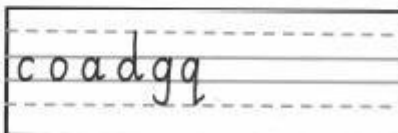
Joins with triangles



Coat hanger hooks

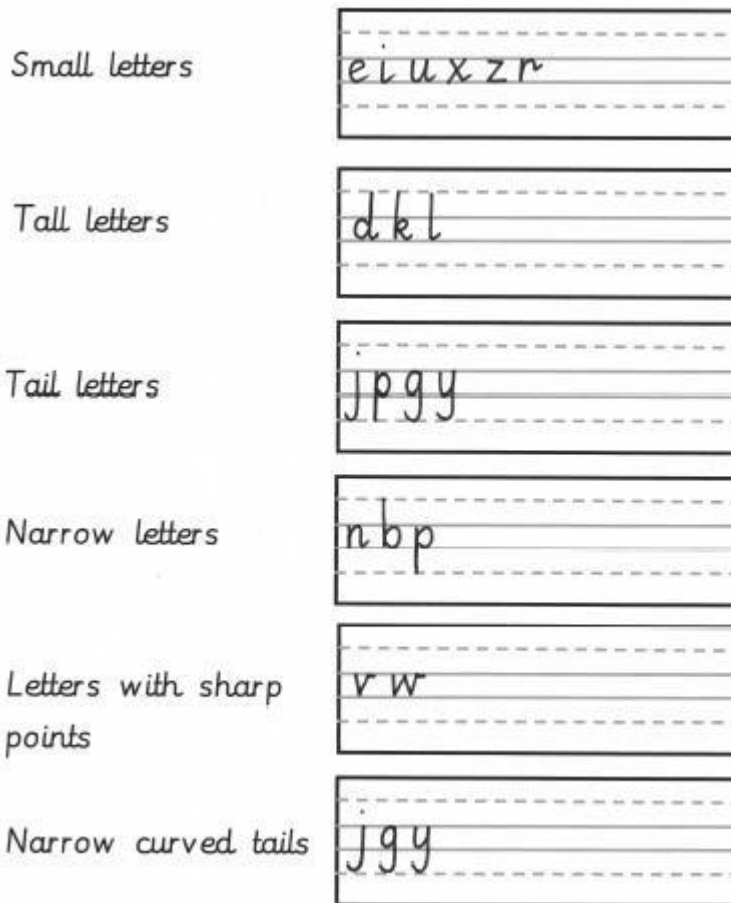


Egg shapes in the coat hanger letters



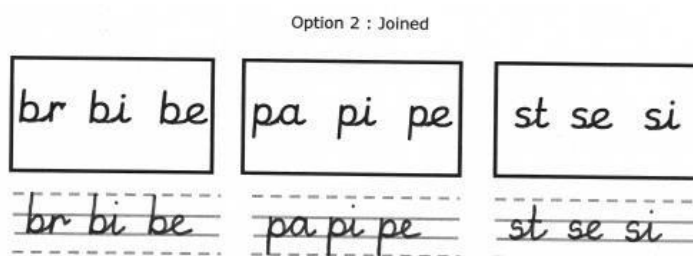
Shoe lace k





All staff will refer to the document ‘Achieving Excellence in Handwriting’ (see Staff Share) for clarification on letter formation, positioning on the line and joining.

The letters b, p and s will be joined using option 2:



Structure and progression through school

Early Years

On entry to Nursery, children will have the chance to experience adult led and independent mark making. As the children progress, any name writing or more ‘formal’ writing will be written on the large A4 landscape line guides and the children will be introduced to the correct terminology for the line guides and letter formation. (This will be subject to the individual child’s rate of progress).

As the children move into Reception, those ready for more formal writing, **will continue to use the large A4 landscape line guides as appropriate.** To ensure correct pencil grip and good fine motor skills, children will have regular practise at the activities in Martin Harvey’s **Fine Motor Skills** document.